



Decorative LED luminaire mounted on a pole, composed of three ellipses.



TECHNICAL DATA

Mounting: on pillar, on wire suspension (included), with special mounting brackets (included)

Body: aluminum sheet

Colour: white

Diffuser: polycarbonate

ELECTRICAL DATA

Power supply efficiency: 76%

Power: 230-240V 50Hz

Includes light source: yes

Type of equipment: ED

Electrical connection: cable with plug

OPTICAL DATA

Light distribution: asymmetric

Way of lighting: direct

Type of optic: reflector

Reflector: white

GENERAL DATA

Lifetime (L70B50): 100 000 h

Operating temperature range: 0°C ... +35°C

Available on request: DIM 1..10V, DALI, DALI remote control

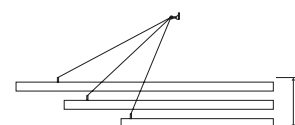
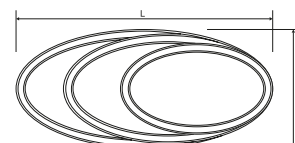
Additional information: smooth opal diffuser (PLX)

Warranty: 5 years

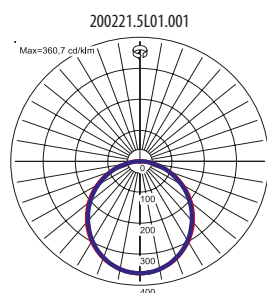
Application: auditorium, shopping centers, pathways, galleries, halls, hotels, corridors, public utility facilities, reception desks, car showrooms, exhibitions

Code	Power LED [W]	Luminaire power [W]	Lumen LED [lm]	Lumen luminaire [lm]	Colour temperature [K]	CRI/Ra
200221.5L01.001	53	70	9300	5900	3000	80

Code	Dimensions [mm] L W H	Pallet quantity	Quantity in package	Net weight [kg]
200221.5L01.001	2816 1300 532	4	1	58.0



LIGHT BEAM CURVES



Luminous flux tolerance +/- 10%.

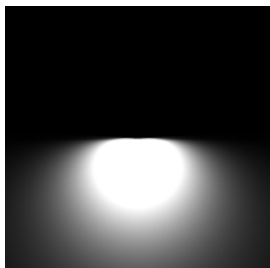
Power tolerance +/- 5%.

Up-to-date product info available on our website www.flashdq.com

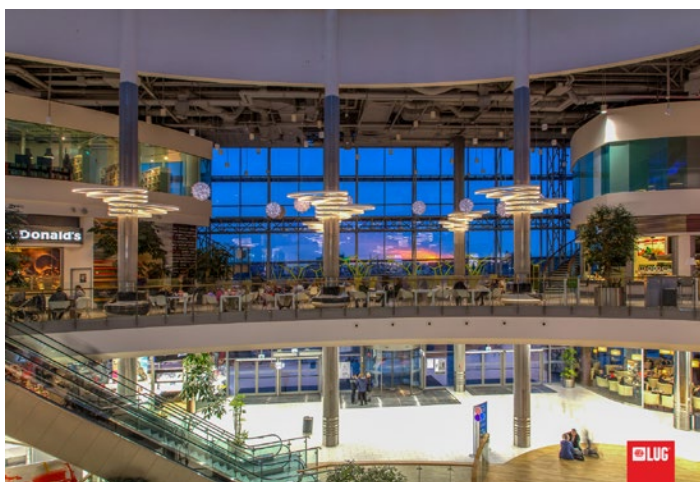
*Luminaire modified according to customer needs. If you wish to order a similar solution, please contact Flash & DQ Department.

WAY OF LIGHTING

200221.5L01.001



OTHER PROJECTS



Forum shopping centre, Gliwice, Poland

Luminous flux tolerance +/- 10%.

Power tolerance +/- 5%.

Up-to-date product info available on our website www.flashdq.com

*Luminaire modified according to customer needs. If you wish to order a similar solution, please contact Flash & DQ Department.